

RX 350 IPPE
Community Workbook



**Husson University School of Pharmacy
Office of Experiential Education
1 College Circle
Bangor, Maine 04401**

Contacts:

Liana Fellis, MBA, MSHR
Operations Manager, Experiential Education
School of Pharmacy
Office: 207-992-1974 Fax: 207-992-1954
Email: Fellisl@husson.edu

Peter McLean, PharmD
Director of Experiential Education
School of Pharmacy
Office: 207-941-7089
Email: McLeanp@husson.edu

Table of Contents

Table of Contents	1
Course Syllabus.....	2
Policies and Procedures.....	3
Pre-Community IPPE Reflection	6
Perpetual Inventory – Controlled Substance Audit	7
Methamphetamine & Pharmacy Law.....	8
Patient Case.....	9
Calculations.....	10
Complementary and Alternative Medicine.....	12
OTC Medication.....	13
Pharmacist Scenarios.....	15
Post-IPPE Reflections	17
Important Reminders.....	18

RX 350 Syllabus

Course Number:	RX 350	
Course Title:	Introductory Pharmacy Practice Experience I - Community	
Credits:	3	
Course Coordinator:	Peter McLean, PharmD Director of Experiential Education Office: 333D Peabody Email: mcleanp@husson.edu Tel: 207-941-7089	
Teaching Faculty:	Assigned community preceptor	
Course description:	<p>The IPPE Community rotation course is designed to expose P1 students to the everyday practice of pharmacy in the different types of community settings (Chain store, Grocery store, Independent...etc.). The students should be introduced to all aspects of professional interactions with patients and coworkers, medication dispensing, and pharmacy management.</p> <p>IPPE-Community is a 4-week rotation course held in the Summer Term (May to August). The students will be assigned by OEE to one of the blocks.</p>	
Required foundation:	P1 in good academic standing of 2.0 or better	
IPPE Competency Statements:	ACPE Code	Competency Statements
	ACPE2016GAPXA 02.i	I can perform a basic review of a patient's medication profile to identify medication allergies, correct doses, duplicate medications, and important drug interactions.
	ACPE2016GAPXA 09.f	I can collect accurate and comprehensive drug information from appropriate sources to make informed, evidence-based, patient-specific, or population-based decisions.
	ACPE2016GAPXA 06.e	I can comply with federal, state, and local laws and regulations related to pharmacy practice.
	ACPE2016GAPXA 08.a	I can use effective written, visual, verbal, and nonverbal communication skills to provide patient/caregiver self-management education.
	ACPE2016GAPXA 07.a	I can communicate effectively (using verbal, non-verbal, and written communication as appropriate) with patients, caregivers, and other healthcare providers, at a suitable level for the partner in the interaction, to engender a team approach to patient care.
	ACPE2016GAPXA 04.c	I can evaluate patient information and medication information that places a patient at risk for developing drug-related problems.
	ACPE2016GAPXA 06.g	I can demonstrate professional and ethical behavior in all practice environments.

- Weekly reflections completed and uploaded
- Preceptor grading and evaluation submitted to RxPreceptor
 - *In order to receive your grade, you must also complete:
 - Preceptor Approved Time Tracking
 - Preceptor/Site/Self Evaluations

Grading Scale: Grades for each course are determined by the preceptor according to the criteria outlined in the course syllabus under activities. Grades are determined on the following percentage basis (+/- based on Course Coordinator discretion):

94-100%	A
90-93%	A-
87-89%	B+
83-86%	B
80-82%	B-
77-79%	C+
73-76%	C
70-72%	C-
≤70%**	F

Student Evaluation: Based on the policies, goals and activities outlined in the syllabus.

1. Students may solicit verbal evaluations of performance at any time throughout the course.
2. Formal final evaluations will be conducted by the preceptor via the RxPreceptor.

Preceptor and Site Evaluation: The students will have the opportunity to **confidentially** evaluate the preceptor, site and IPPE, on Rx Preceptor. Constructive feedback on the quality of the experience, site and preceptor allows for program improvement. Grades will not be submitted to the Registrar’s Office until IPPE evaluations are submitted and other course work is completed and uploaded.

Assignments: Each student is expected to complete the IPPE institutional workbook and the assigned reflections. The student will also complete a ‘checklist’ of items to be completed at the site. Failure to complete the workbook and the reflections will result in a grade of “incomplete” for the course and may result in failure. Completed assignments will be uploaded into ExamSoft. Additionally, special projects may be assigned by the preceptor on an “as needed” basis and must be completed and uploaded into ExamSoft by the end of the rotation.

Please note that the material in this syllabus is subject to change at the discretion of the preceptor and coordinator. The student will be informed of any changes by the preceptor.

Weekly Reflections

At the end of each week write a reflection/summary essay that addresses the activities you have participated in and how they aligned with your goals and objectives. Also include any newly identified objectives and your course of action for the upcoming week which will maximize your learning opportunities while attaining your goals. **(Total of four reflections)** The final reflection must discuss interprofessional collaboration and its impact on patient care in the hospital setting.

Prompt for 11.1

What distinct values and ethics of the professions represented on the healthcare team did you expect, and what did you observe? How did these different ethics or values impact the team's collaboration?

Prompt for 11.2

You had an opportunity to engage with a physician's student as part of the IP team to both learn from and with them during this experience. Please describe what you learned about the abilities, competencies, and scope of practice of various healthcare professionals. Which additional interprofessional might have contributed to this case study – please explain your reasoning?

Prompt for 11.3

What are the pharmacist's responsibilities as a participant of an interprofessional healthcare team? What processes did the team use to make decisions? What skills or knowledge did you observe that you may use to inform your future therapeutic decision-making?

*****To maximize exposure, the IPPE is designed for four weeks, five days a week, at eight hours per day for 160 hours total. The schedule may be altered by the preceptor (not the student) and the student will accommodate the preceptor's schedule. If your preceptor identifies other opportunities/experiences, i.e., weekend or night shift, that fall outside M-F, those hours may be substituted for a day shift.***

Rotation Assignments

The following assignments will require you to gather specific information at your site. *However*, the work/responses are to be completed as homework **off-site**. The primary purpose of this IPPE experience is to “expose P1 students to the everyday practice of pharmacy.”

1. Pre-Community IPPE Reflection

Answer the following questions prior to your first day of the IPPE.

*Discuss your reflection with your preceptor on the first day or prior to that time.

What is your definition of professionalism?

What is/are your goal/s for this IPPE? (A goal is overarching).

What are your objectives for this IPPE? (Objectives are ways to get closer to your goal).

Is it okay to give a few doses of medications to a patient to tie them over until their prescriber can be contacted to authorize a refill? Please explain your answer.

Is it okay for a pharmacist to charge more to a cash-paying customer to offset the low reimbursement rates paid by third party insurance companies? Please explain your answer.

2. Perpetual Inventory – Controlled Substance Audit

As a follow up to one of the assignments we had in lab, you are going to audit two drugs from your assigned site. Please discuss with your preceptor what records you will need. Discuss checking your audit against the perpetual inventory book, DEA 222 forms, invoices, and patient prescriptions/profiles. Here are the two medications for the audit: OxyContin 20mg and Vyvanse 30mg. The period will be for the last 90 days.

Drug	Start Inv.	Purchased	Total	On Hand	Sold	Total	Difference
OxyContin 20mg							
Vyvanse 30mg							

3. Methamphetamine & Pharmacy Law

The Combat Methamphetamine Epidemic Act of 2005 ([Title VII of the USA PATRIOT Improvement and Reauthorization Act of 2005, P.L. 109-177](#)) was signed into law March 9, 2006. This document discusses those changes made by the Combat Methamphetamine Epidemic Act which primarily affect persons selling products containing the List I chemicals ephedrine, pseudoephedrine, and phenylpropanolamine. *What restrictions does the state of Maine place on the sale of targeted methamphetamine precursors? (Hint: Look at Maine law to complete questions.)*

- a. A retailer may not sell more than **3.6g** of a targeted methamphetamine precursor per transaction.
- b. Except with regard to single-dose packages of not more than **60mg** that are kept within **30 feet** and in **the direct line of sight of staff**, a retailer must keep targeted methamphetamine precursors in a location that is **locked** or **otherwise not accessible by customers**.
- c. Except with regard to single-dose packages of not more than **60mg** that are kept within **30 feet** and in **the direct line of sight of staff**, the sale of targeted methamphetamine precursors must be completed by:
 - i. **A licensed pharmacist or licensed pharmacy technician; or**
 - ii. **An employee of the retailer who accepts payment for the targeted methamphetamine precursor as long as:**
 - a. **The employee works under the direct supervision of a pharmacist in the pharmacy area of the retail store; and**
 - b. **A licensed pharmacist or licensed pharmacy technician has given individual, express approval for the purchase.**

Pharmacy Robbery

Discuss with your preceptor the procedure they follow in case of a robbery. Provide a description of that procedure.

Forged Prescriptions

Please discuss with your preceptor the procedure they follow when a forged prescription is received in the pharmacy. Provide a description of that procedure.

Prescription Error (mistakes)

Please discuss with your preceptor the procedure they follow if a mistake is made in filling a prescription. Briefly describe their procedure.

4. Patient Case

MS is a 57-year-old female who presents to your pharmacy to pick up a new prescription for Amoxicillin, after being diagnosed with pharyngitis.

Past Medical History:
Atrial Fibrillation

Current Medications:
Amoxicillin 875 mg q6h
Warfarin 5mg daily
Metoprolol XL 500 mg TID
Multivitamin daily

Allergies:
Penicillin - Rash/Hives

Questions:

1. Does MS have any allergies that may be harmful with any of the medications she is prescribed?

Penicillin - Rash/Hives

2. Are there any drug-drug interactions from the medication profile MS has?

Yes. Penicillins may enhance the anticoagulant effect of Vitamin K Antagonists.

3. Are all of the doses correct for MS?

No

4. If not, what should they be?

Amoxicillin 1g Daily or 500mg twice daily for 10 days

Metoprolol XL max dose is 200mg daily

5. Calculations

1. A patient weighs 176 pounds. What is the patient's weight in kilograms?

80kg

2. If 200 capsules contain 500 mg of an active ingredient, how many milligrams of the active ingredient will 76 capsules contain?

190mg

3. If 1,250 grams of a mixture contains 80 grams of drug, what is the percentage strength (w/w) of the mixture? Round to the nearest tenth.

6.4%

4. Express 1:4,000 as a percentage strength.

0.025%

5. Calculate the total quantity and total days supply for the following prescription:

<p><i>Magic Mouthwash</i></p> <p><i>80cc viscous lidocaine</i></p> <p><i>80cc Benadryl</i></p> <p><i>80cc Maalox</i> # 8oz</p> <p><i>Swish and spit 15cc po</i></p> <p><i>q4h prn sore throat</i></p>

QTY = 240mL Day's supply = 2supply

6. A penicillin V 250 mg tablet equals 400,000 units of penicillin activity. A patient is taking penicillin V 500 mg tablets QID for 7 days. How much penicillin activity, in units, will this patient receive in the total prescription?

22,400,000units

7. Calculate the total quantity and total days supply for the following prescription:

<i>Voltaren 1% gel</i> <i>(100g/tube)</i>	
aaa 4 grams bid	# 4

Total QTY = 400g 50day supply

8. What is the BMI for a 64 year old female patient weighing 112kg with a height of 168cm?

39.7kg/m²

a) Determine the patient's ideal body weight (IBW)

59.5kg

b) Is an adjusted body weight (Adj.BW) more appropriate for this patient? Calculate the Adj.BW

80.5kg

c) If this patient's serum creatinine is 1.3 mg/dL, what is their creatinine clearance rate (CrCl)? Use their IBW.

41mL/min

9. Calculate the days supply for the following prescription:

<i>Levemir flexpen</i> <i>(U-100)</i>	
70 U qd	# 15mL

Days supply = 21days

6. Complementary and Alternative Medicine

Explore the aisles of the pharmacy and complete the following table:

Herbal	Cost	Recommended Dose	Recommended Use	Warnings / Interactions
Prevagen				
Saw Palmetto				
Glucosamine / Chondroitin				
Black Cohosh				
St. John's Wort				

Utilize your Pharmacy Resources to complete the following table:

Drug	Efficacy	Safety
Prevagen		
Saw Palmetto		
Glucosamine / Chondroitin		
Black Cohosh		
St. John's Wort		

7. Over the Counter (OTC) Medication

Explore the aisles of the pharmacy and complete the following table with at least two different products for each presenting symptom.

Recommended Use	Generic Name	Recommended Dose	Primary Patient Counseling Points
Cough			
Plugged Sinuses			
Fever			
Pain			
Constipation			

Recommended Use	Generic Name	Recommended Dose	Primary Patient Counseling Points
Diarrhea			
Heartburn			
Athletes' Foot			
Vaginal Yeast Infection			
Child With Fever			
Child With Pain			

8. Pharmacist Scenarios

I. Caring can be communicated via understanding a patient’s concerns and showing empathy to the patient in a non-judgmental way. Describe a scenario that you have encountered at your site where you (or the pharmacist) demonstrated empathy to a patient in distress.

Date: _____

Description of scenario:

How was the situation handled?

What would you have done differently?

II. Assertiveness is critical in maintaining control and professionalism in the pharmacy when dealing with patients who are disruptive and/or verbally abusive. Describe a scenario that you have encountered at your site where you (or the pharmacist) demonstrated assertiveness to a patient in distress.

Date: _____

Description of scenario:

How was the situation handled?

What would you have done differently?

III. Effective interprofessional communication is a key aspect to all areas of healthcare. In the community setting, pharmacists will interact with providers as well as patients in order to discuss the proper medication management. Describe a scenario that you have encountered at your site where you (or the pharmacist) interacted with a provider and a patient. What distinction(s) did you observe between the way you or your preceptor interacted with the patient and the provider?

Date: _____

Description of scenario with patient:

Description of scenario with provider:

Were there noticeable differences in the communication style between the two interactions? Give examples.

What would you have done differently?

9. Post IPPE (Weekly Reflection #4)

I. Write a reflective essay on what you have taken away from this rotation. Include in your evaluation whether you met your personal goal(s) and objectives for this IPPE experience. (This is not a one-paragraph assignment, but an opportunity for you to seriously reflect upon what you were exposed to and accomplished toward your professional goals during the four weeks.) Utilize your one-week reflection/summary reports as a guide.

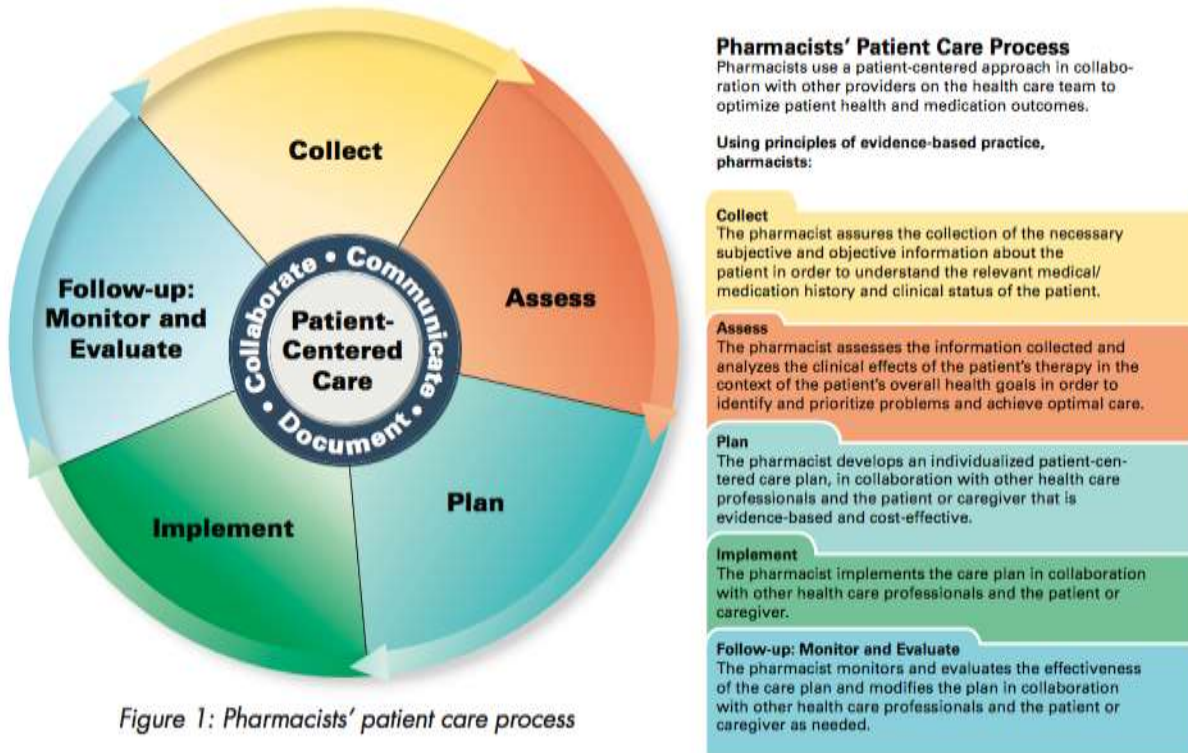


Figure 1: Pharmacists' patient care process

The pharmacists' patient care process uses a patient-centered care approach, in collaboration with other providers, in order to optimize patient health outcomes. How did your IPPE site utilize this process for the wellbeing of their patients? Could they improve on this? If so, how? Please go through each step and explain your thoughts. (Include this in Post-IPPE Reflection).

II. Has your perspective changed?

- Is it okay to give a few doses of medications to a patient to tie them over until their prescriber can be contacted to authorize a refill? Please explain your answer.
- Is it okay for a pharmacist to overcharge cash paying customers to offset the low reimbursement rates paid by third party insurance companies? Please explain your answer
- What is your definition of professionalism?

Important Reminders!!!

- You must record your hours in RxPreceptor. Your preceptor will confirm the hours recorded.
- At the end of your rotation, you are required to complete two evaluations
 - Evaluation of Preceptor
 - Site Evaluation.

One hallmark of a professional is giving back to their profession. Husson School of Pharmacy and you, the student, are fortunate that so many practicing pharmacists have stepped forward to contribute their time and talents to the experiential component of your education. In a few years you will have the opportunity to meet this expectation, and give back to HUSOP and/or the profession of pharmacy. **The preceptor's contribution to your education is a gift and etiquette recommends it should be recognized. A written thank you note is always in style.**